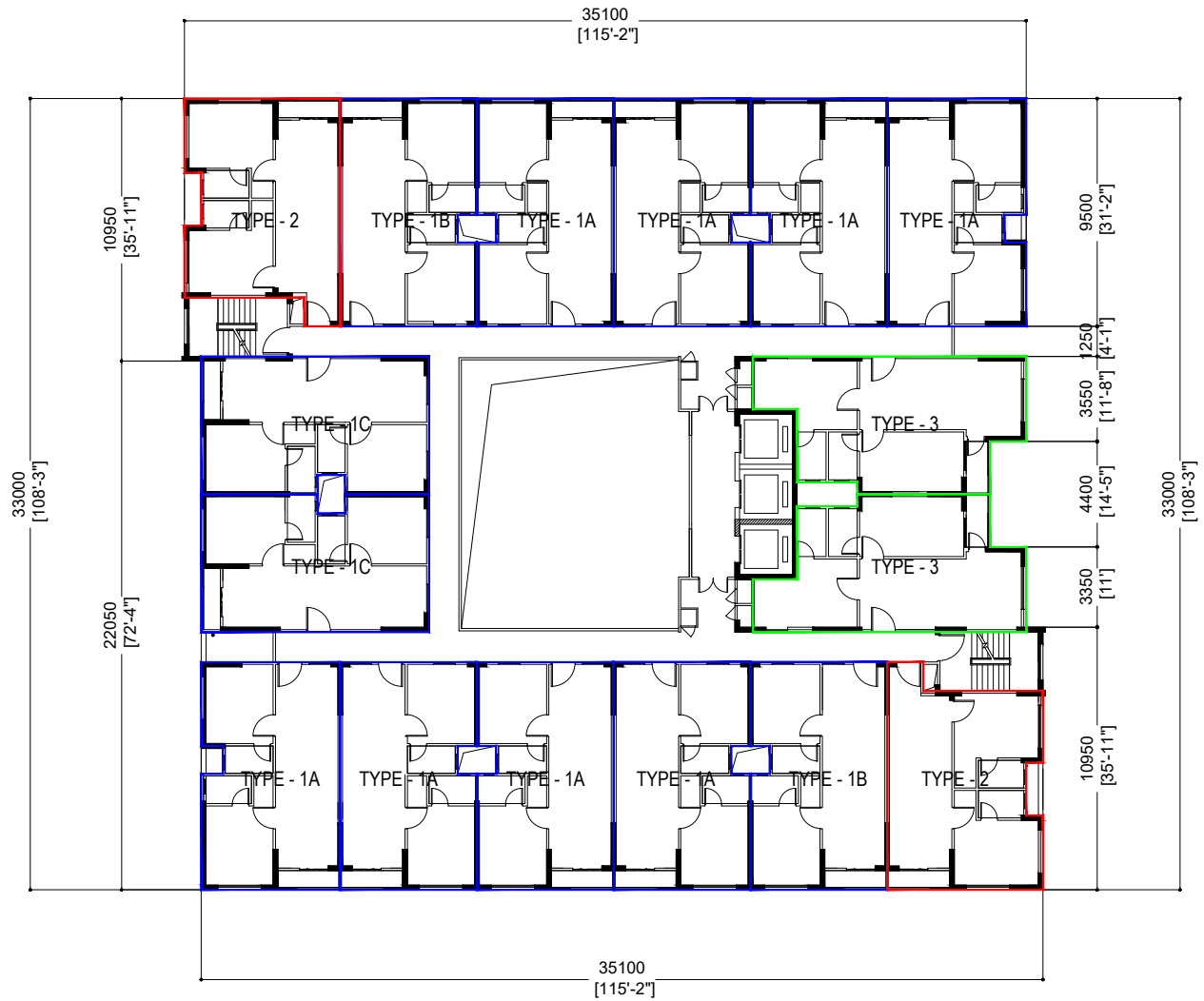


HIYA 7000 HOUSING - 16 UNITS BUILDING



HIYA 7000 HOUSING - 16 UNITS

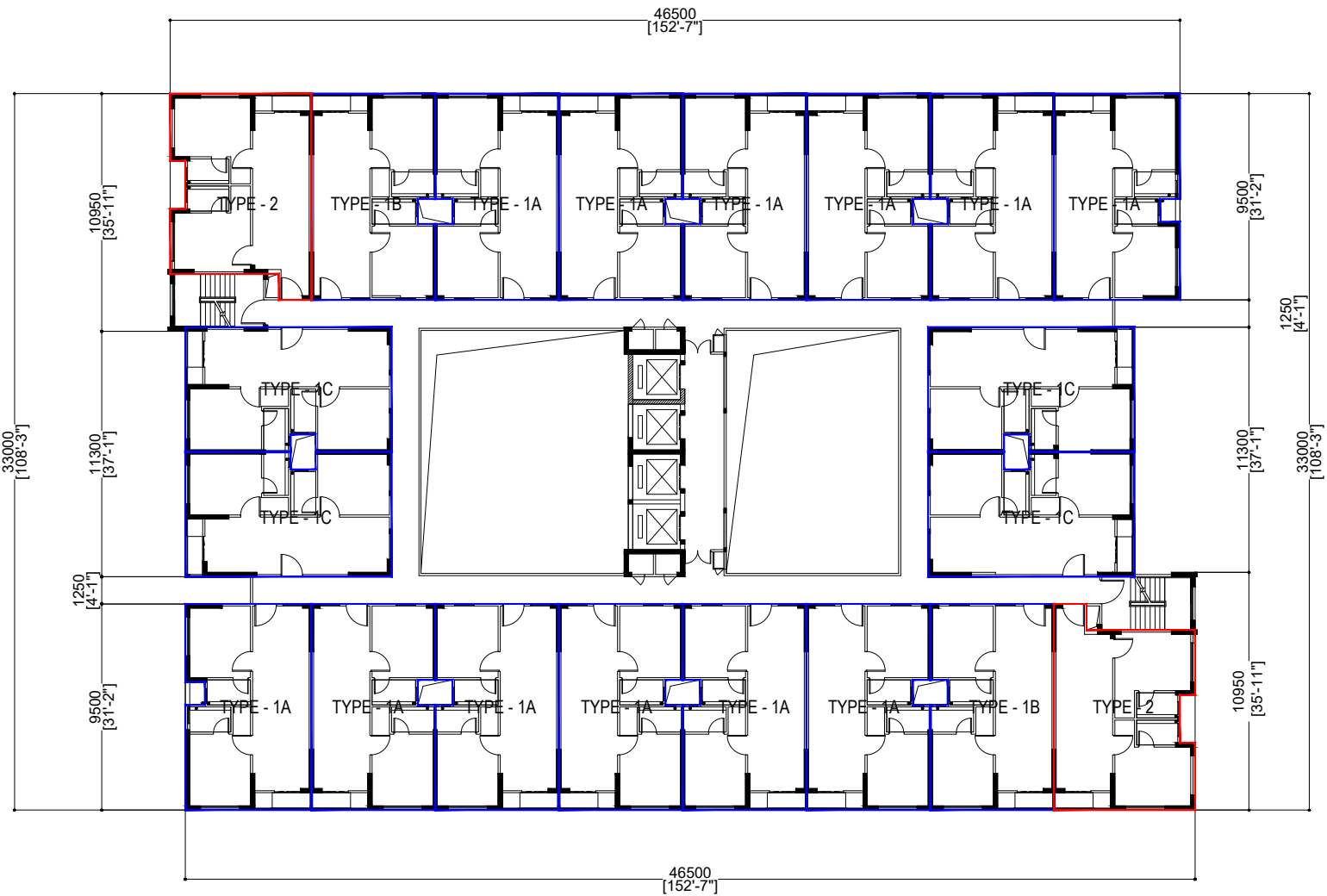
TYPE 1 (A,B & C) - 53.23 sqm / 572.96 sqft

TYPE 2 - 54.21 sqm / 583.51 sqft

TYPE 3 - 54.45 sqm / 586.09 sqft

SCALE: 1:300

HIYA 7000 HOUSING - 20 UNITS BUILDING



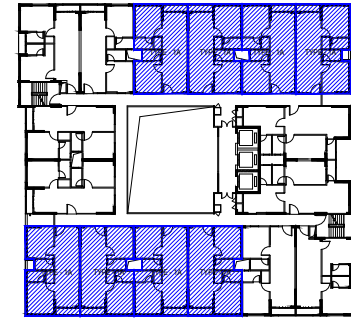
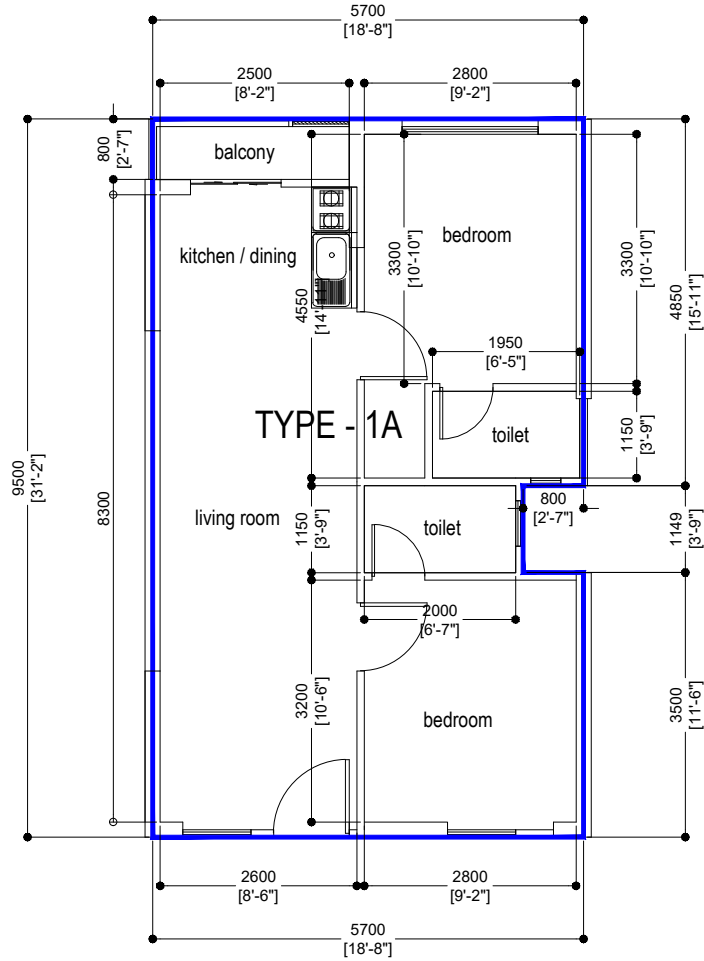
HIYA 7000 HOUSING - 20 UNITS

TYPE 1 (A,B & C) - 53.23 sqm / 572.96 sqft

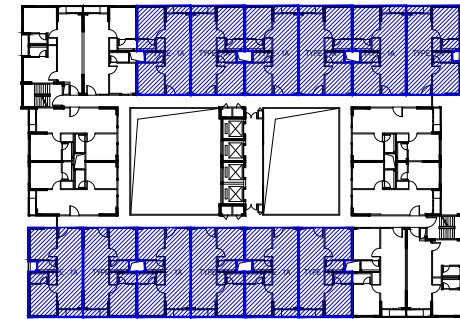
TYPE 2 - 54.21 sqm / 583.51 sqft

SCALE: 1:300

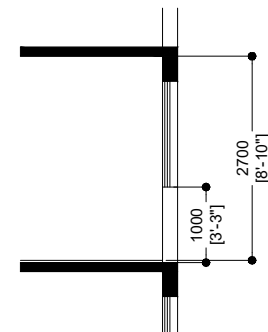
UNIT TYPE - 1A



16 UNITS BUILDING



20 UNITS BUILDING



TYPICAL FLOOR HEIGHT

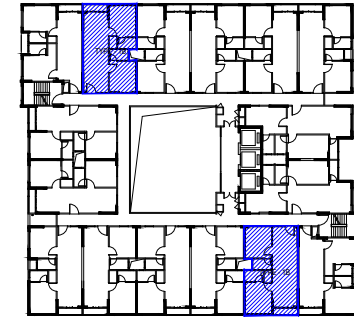
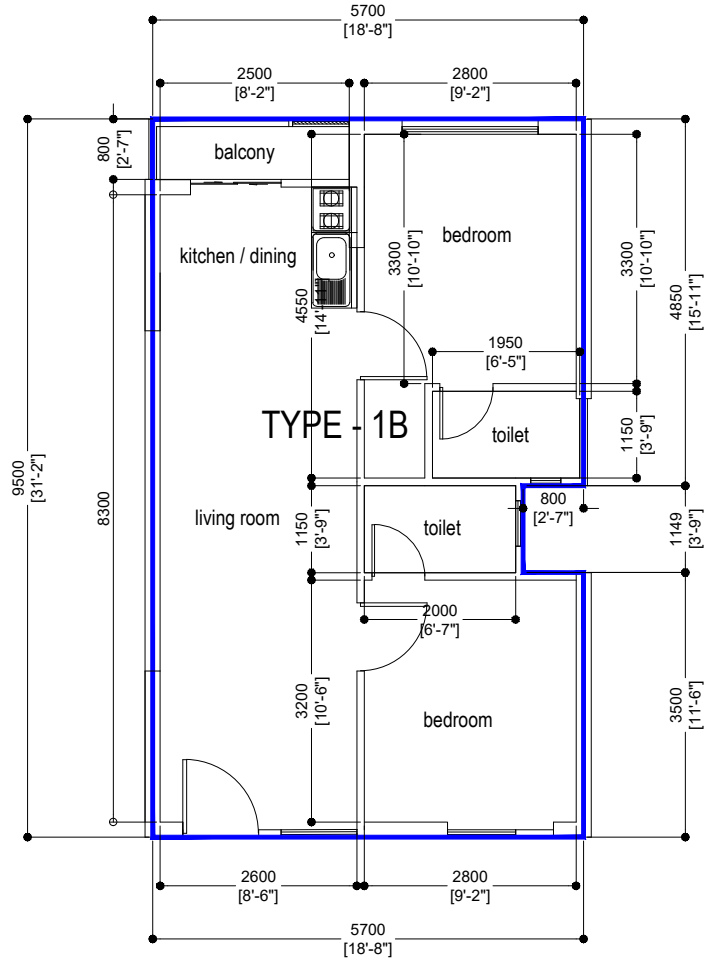
DETAIL DRAWING

UNIT TYPE - 1A : 53.23 m² (572.96 ft²)

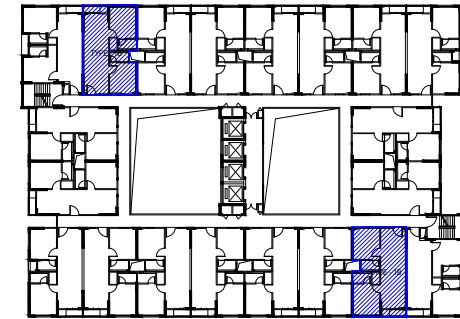
SCALE: 1:100

THE MEASUREMENTS MENTIONED ABOVE
MIGHT BE SUBJECT TO SLIGHT CHANGES
ONCE AN AS-BUILT HAS BEEN TAKEN

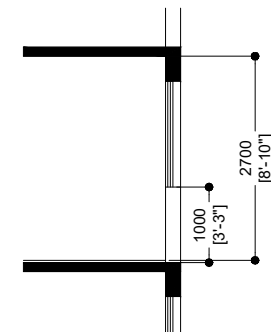
UNIT TYPE - 1B



16 UNITS BUILDING



20 UNITS BUILDING



TYPICAL FLOOR HEIGHT

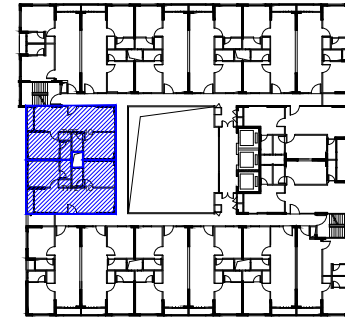
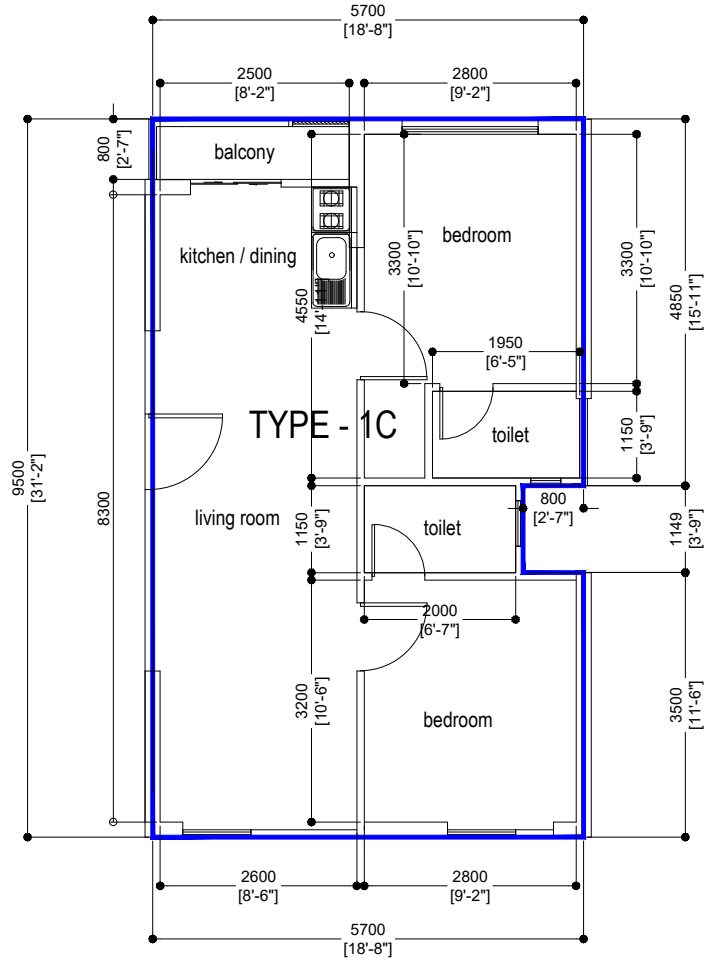
DETAIL DRAWING

UNIT TYPE - 1B : 53.23 m² (572.96 ft²)

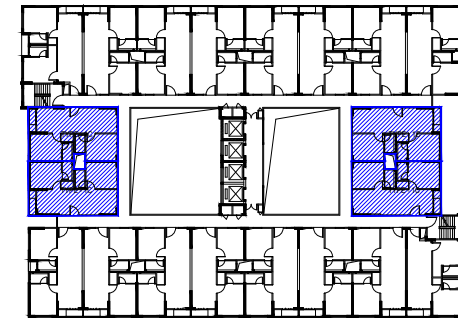
SCALE: 1:100

THE MEASUREMENTS MENTIONED ABOVE
 MIGHT BE SUBJECT TO SLIGHT CHANGES
 ONCE AN AS-BUILT HAS BEEN TAKEN

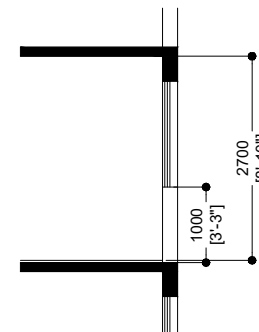
UNIT TYPE - 1C



16 UNITS BUILDING



20 UNITS BUILDING



TYPICAL FLOOR HEIGHT

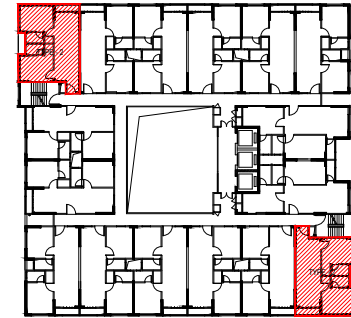
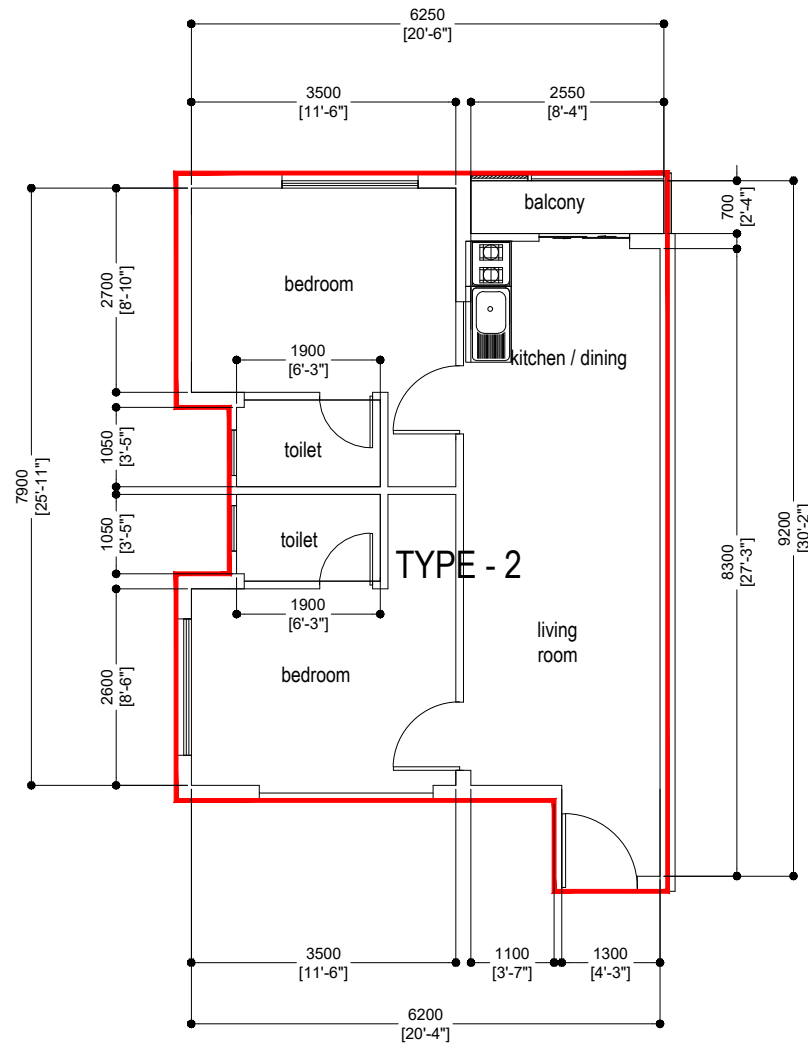
DETAIL DRAWING

UNIT TYPE - 1C : 53.23 m² (572.96 ft²)

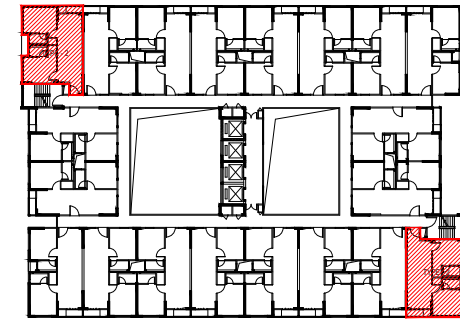
SCALE: 1:100

THE MEASUREMENTS MENTIONED ABOVE
MIGHT BE SUBJECT TO SLIGHT CHANGES
ONCE AN AS-BUILT HAS BEEN TAKEN

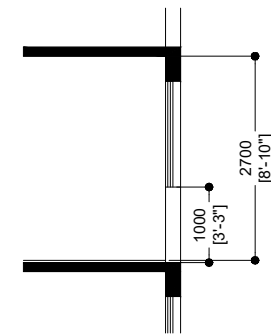
UNIT TYPE - 2



16 UNITS BUILDING



20 UNITS BUILDING



TYPICAL FLOOR HEIGHT

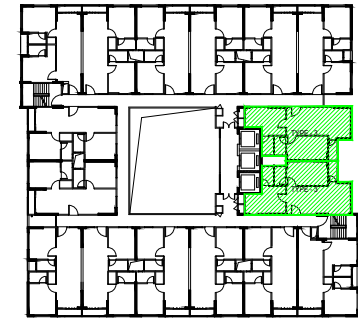
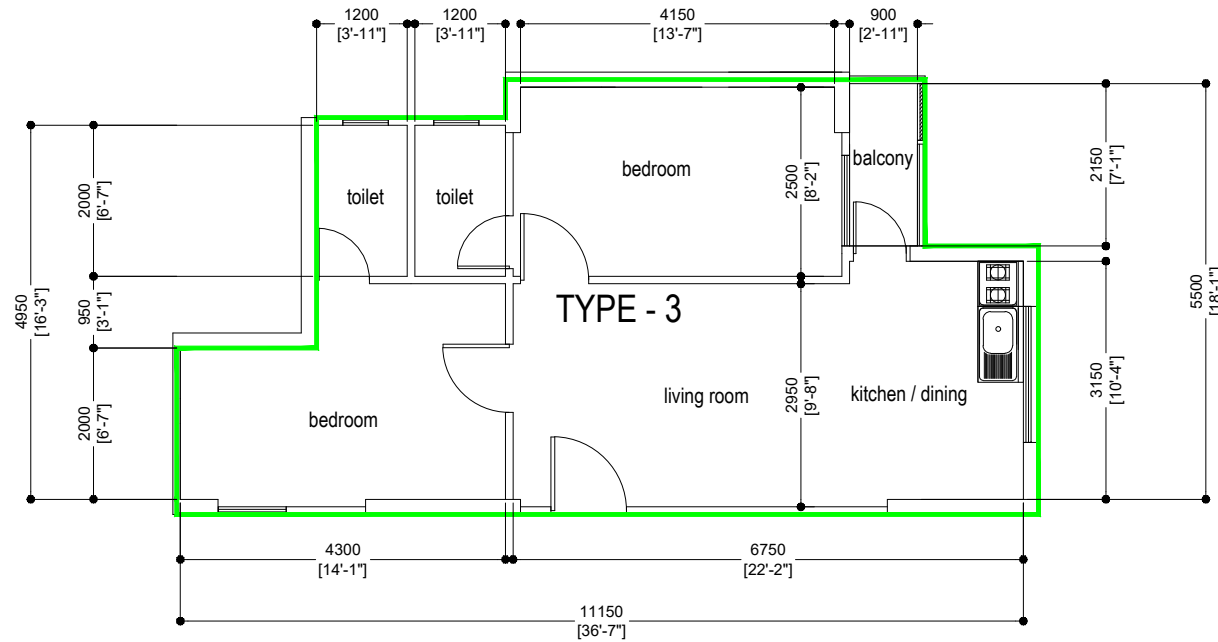
DETAIL DRAWING

UNIT TYPE - 2 : 54.21 m² (583.51 ft²)

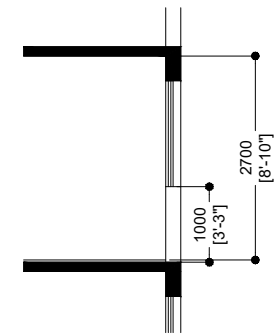
SCALE: 1:100

THE MEASUREMENTS MENTIONED ABOVE
MIGHT BE SUBJECT TO SLIGHT CHANGES
ONCE AN AS-BUILT HAS BEEN TAKEN

UNIT TYPE - 3



16 UNITS BUILDING



TYPICAL FLOOR HEIGHT

THE MEASUREMENTS MENTIONED ABOVE
MIGHT BE SUBJECT TO SLIGHT CHANGES
ONCE AN AS-BUILT HAS BEEN TAKEN

DETAIL DRAWING

UNIT TYPE - 3 : 54.45 m² (586.09 ft²)

SCALE: 1:100